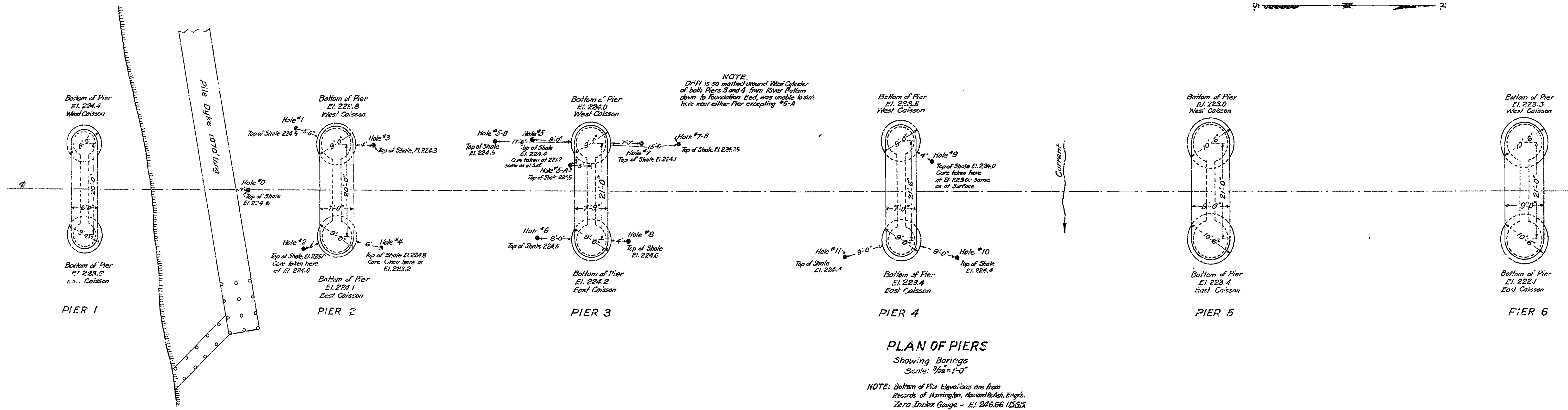
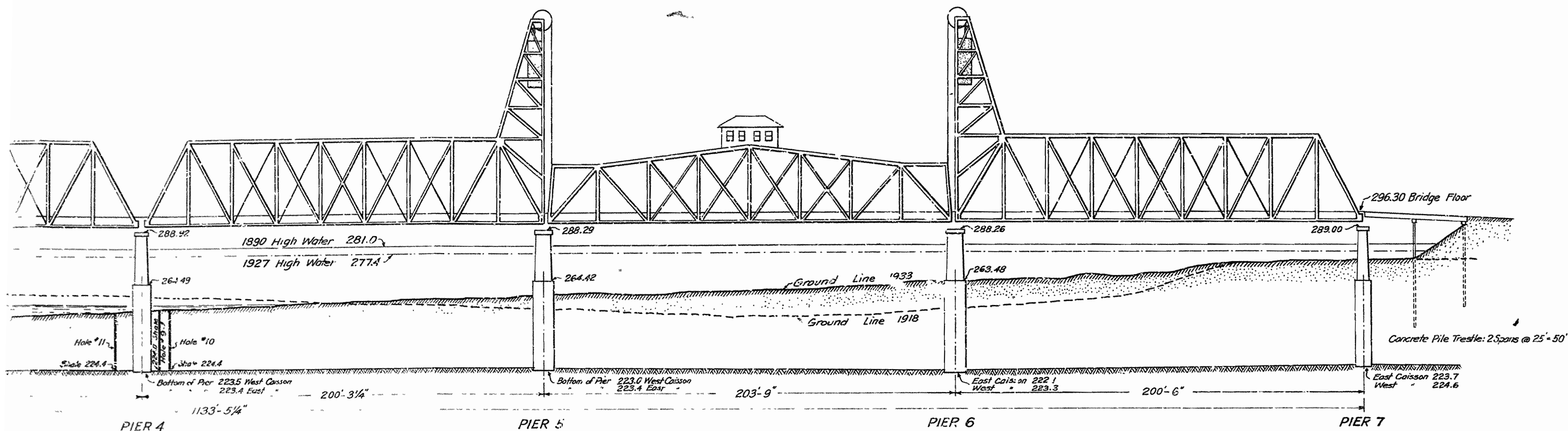
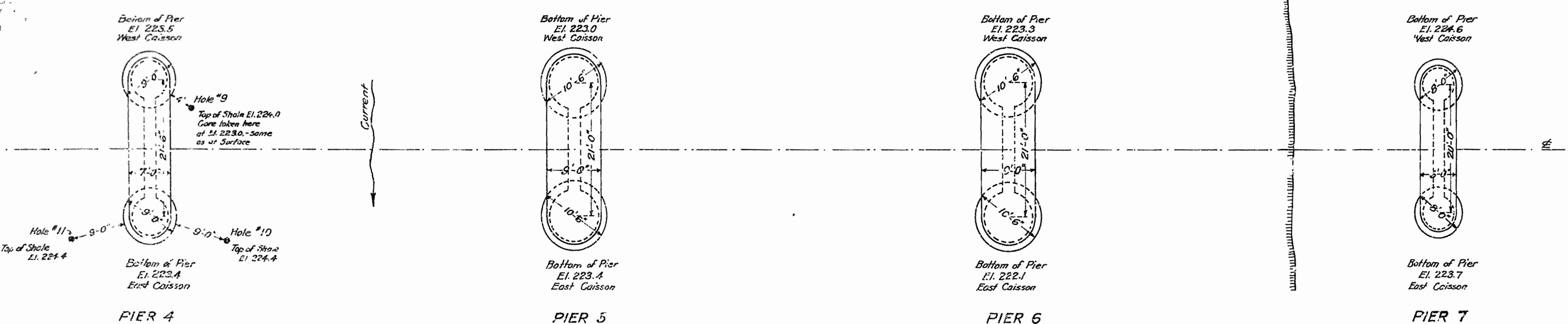


**ELEVATION**  
Scale: 1" = 30'



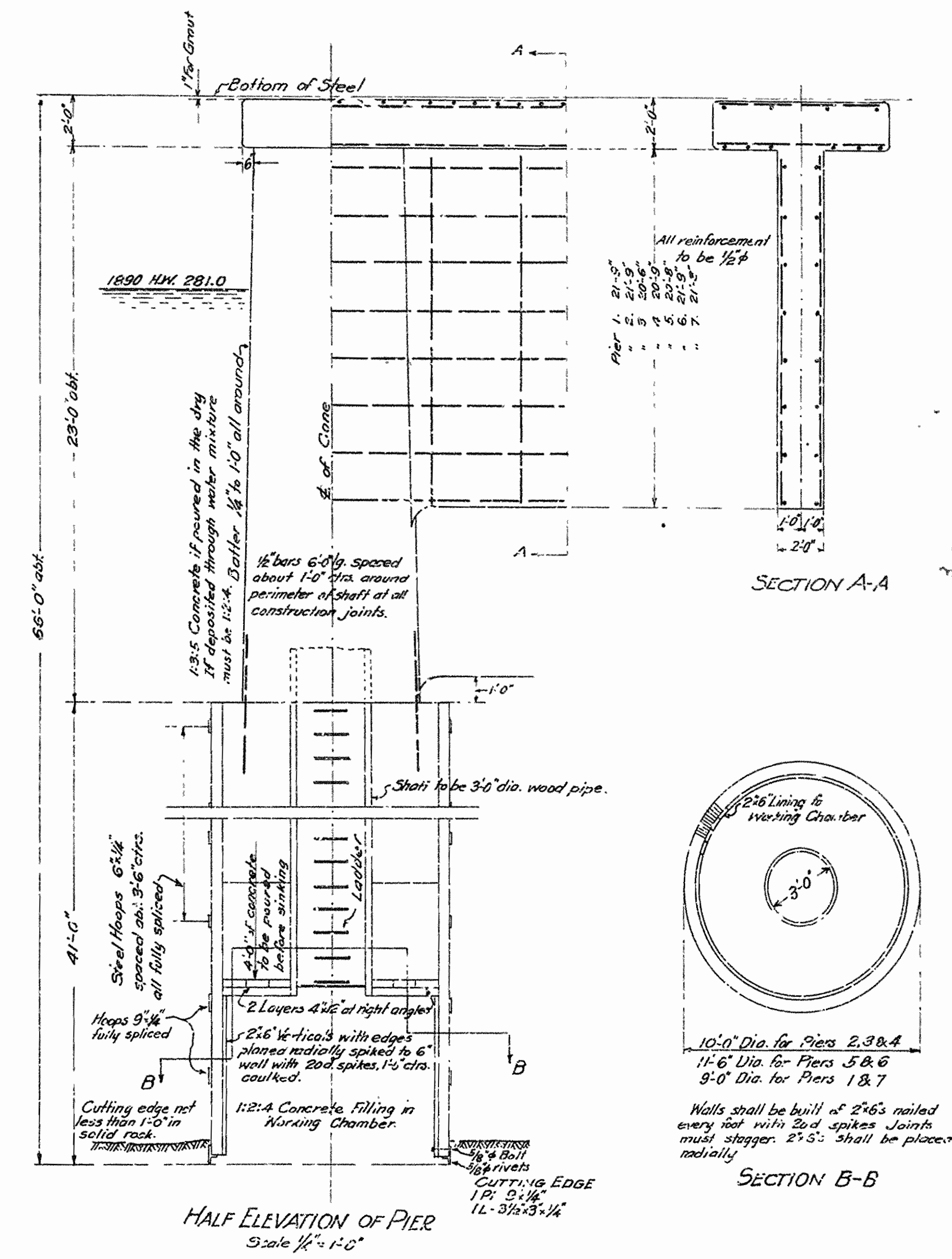


ELEVATION  
Scale: 1" = 30'



PLAN OF PIERS  
Showing Borings  
Scale: 3/8" = 1'-0"

NOTE: Bottom of Pier Elevations are from  
Records of Harrington, Howard & Ash, Eng'rs  
Zero Index Gauge = Ft. 246.66 USGS.



HALF ELEVATION OF PIER  
Scale 1/4" = 1'-0"

NOTE: The above traced from original plan (Sheet No.)  
Harrington, Howard & Ash, Eng'rs.

**RED RIVER BRIDGE DISTRICT**  
OF MILLER AND LITTLE RIVER COUNTIES, ARK.

**INDEX BRIDGE**

PLAN OF PIER REINFORCEMENT  
GENERAL ELEVATION AND PIERS

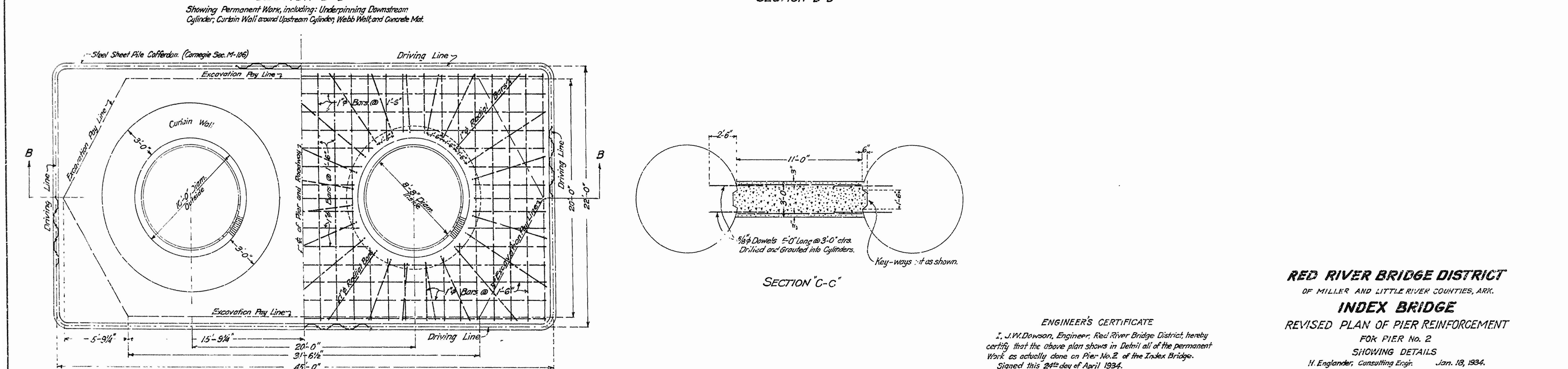
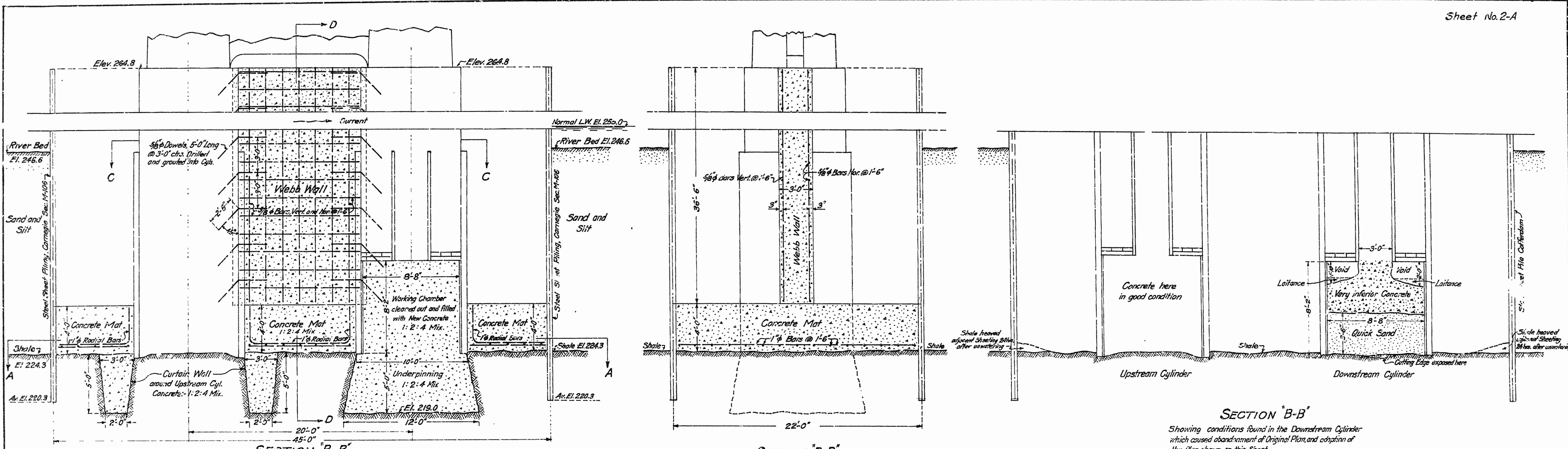
SHOWING BORINGS AT PIERS 2, 3 AND 4

J.W. Dawson, Eng'g. Texarkana, Ark. May 1933.

Approved  
J.W. Dawson  
Bridge Engineer  
Arkansas Highway Comm.

Scale as noted  
NOTE: Level Elevations based on U.S.S. Datum.

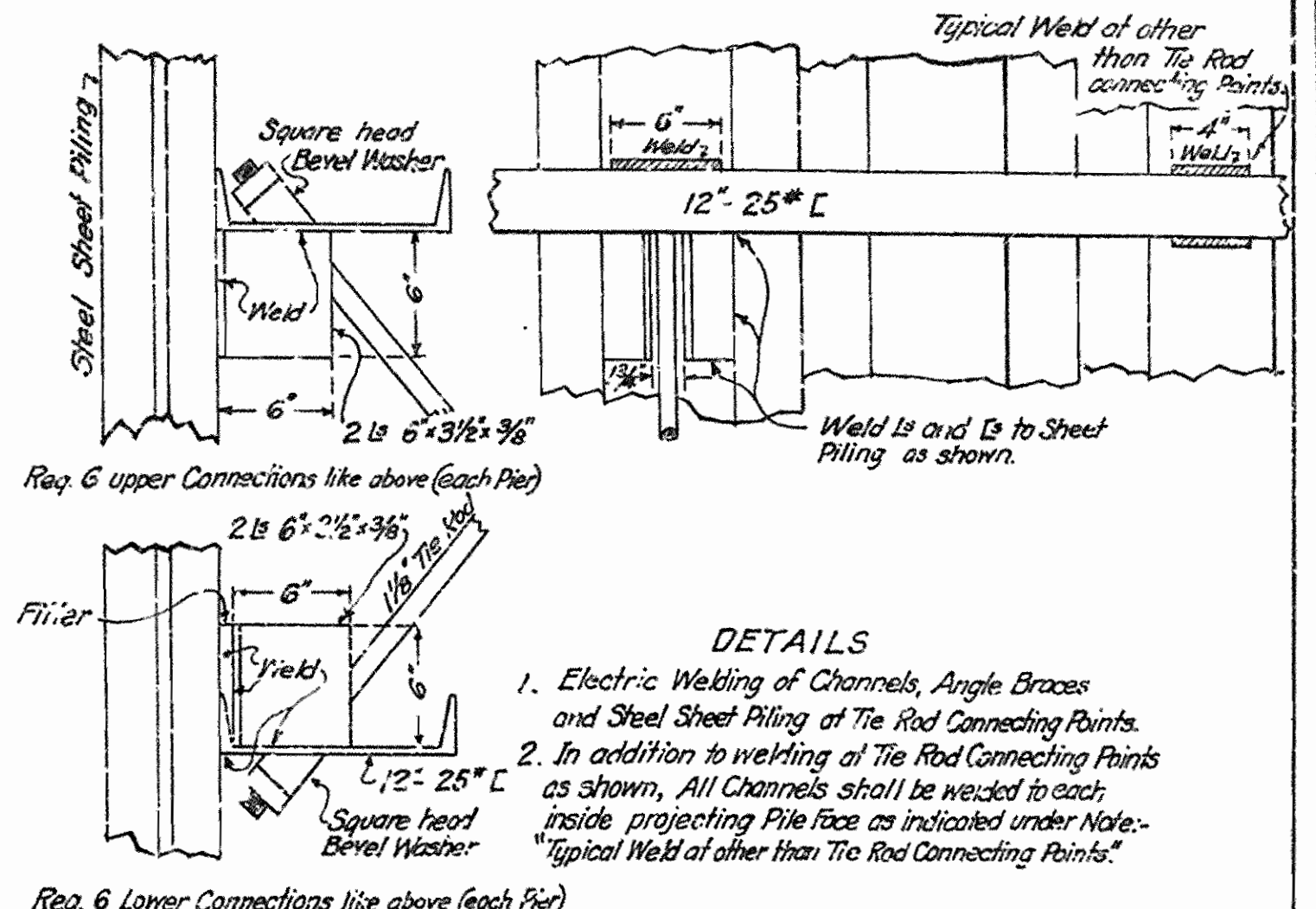
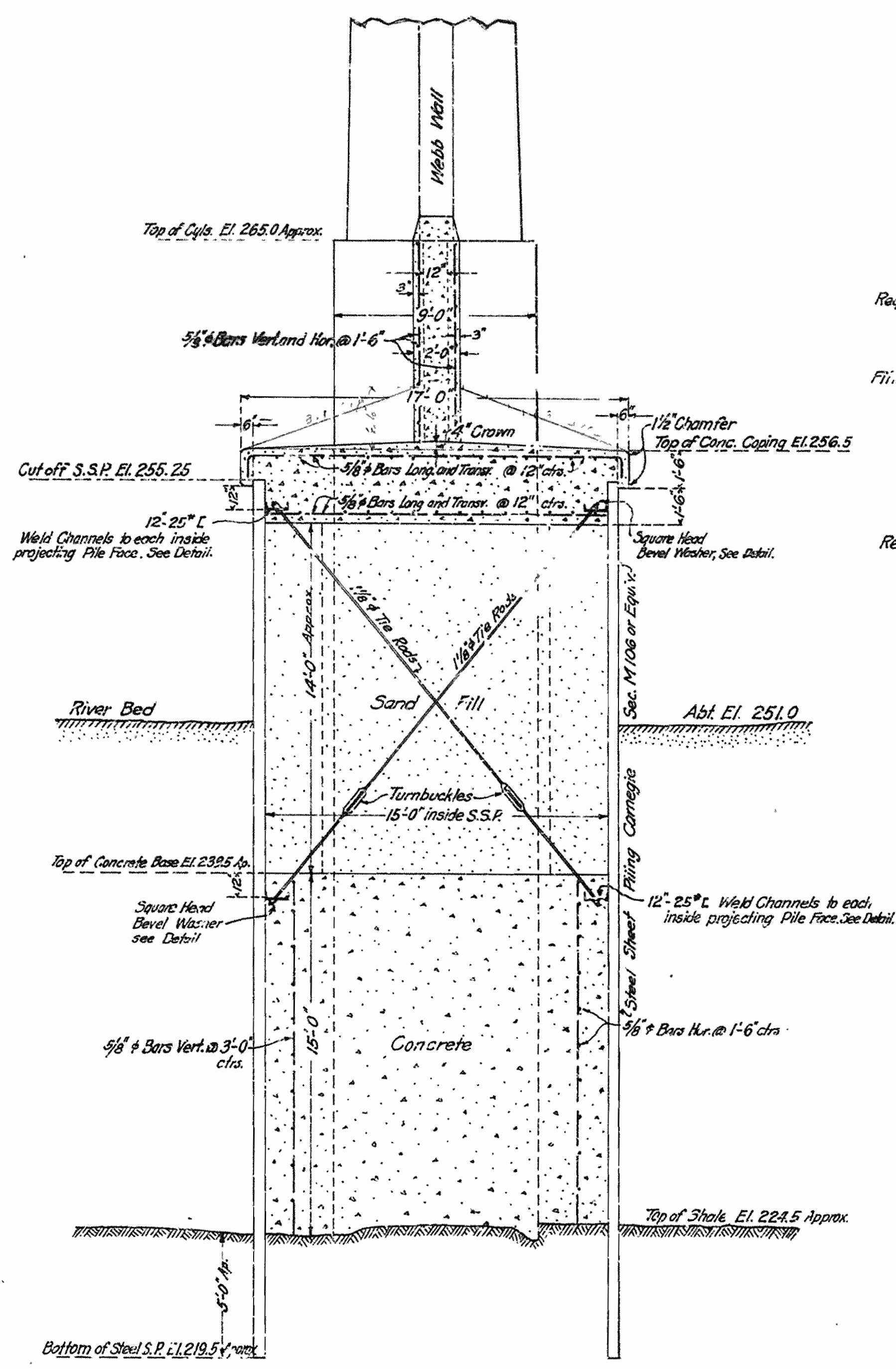
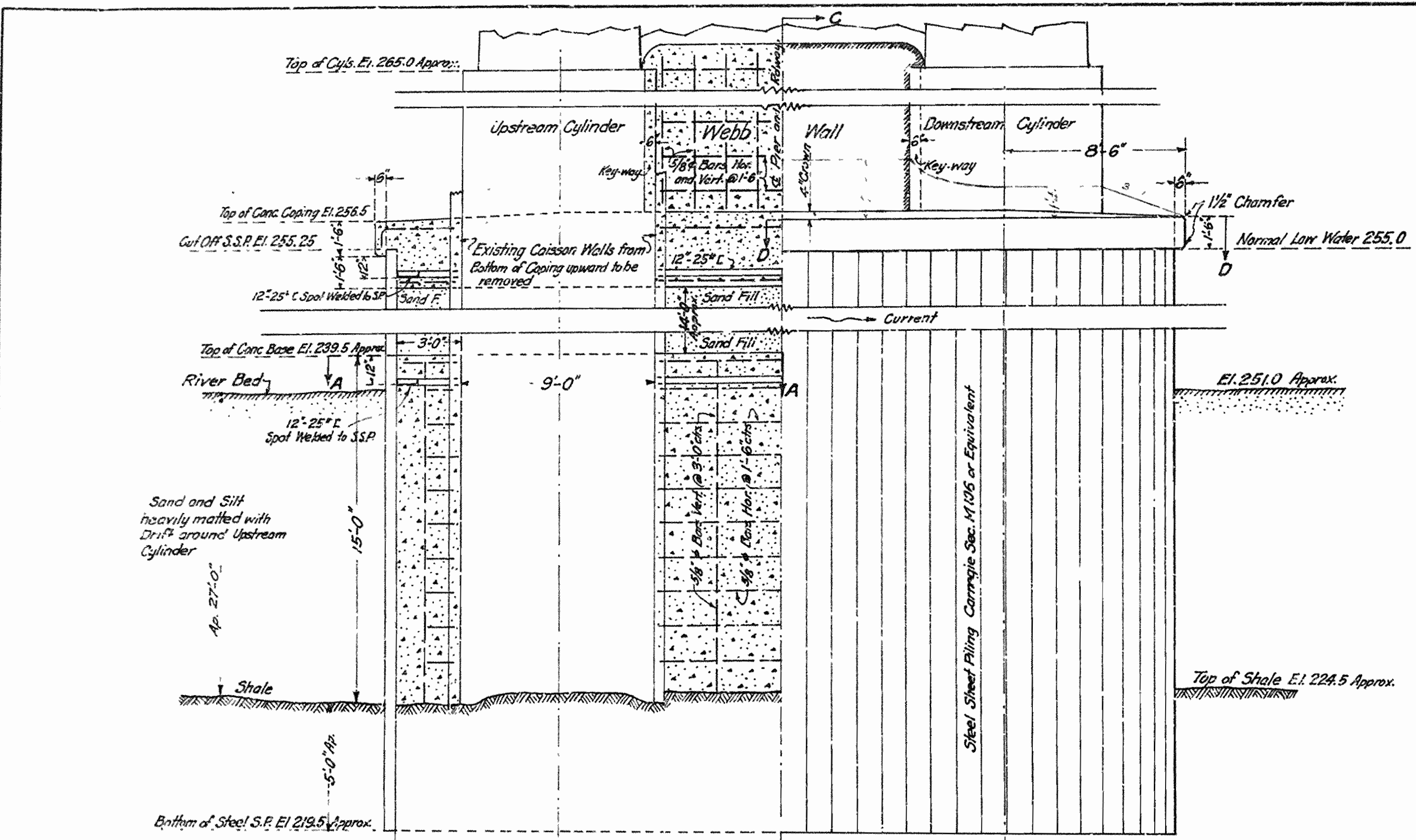
BRIDGE No. 1474 DRWG. No. 5050



ENGINEER'S CERTIFICATE  
 I, J.W. Dawson, Engineer, Red River Bridge District, hereby certify that the above plan shows in detail all of the permanent work as actually done on Pier No. 2 of the Index Bridge.  
 Signed this 24th day of April 1934.  
 J.W. Dawson

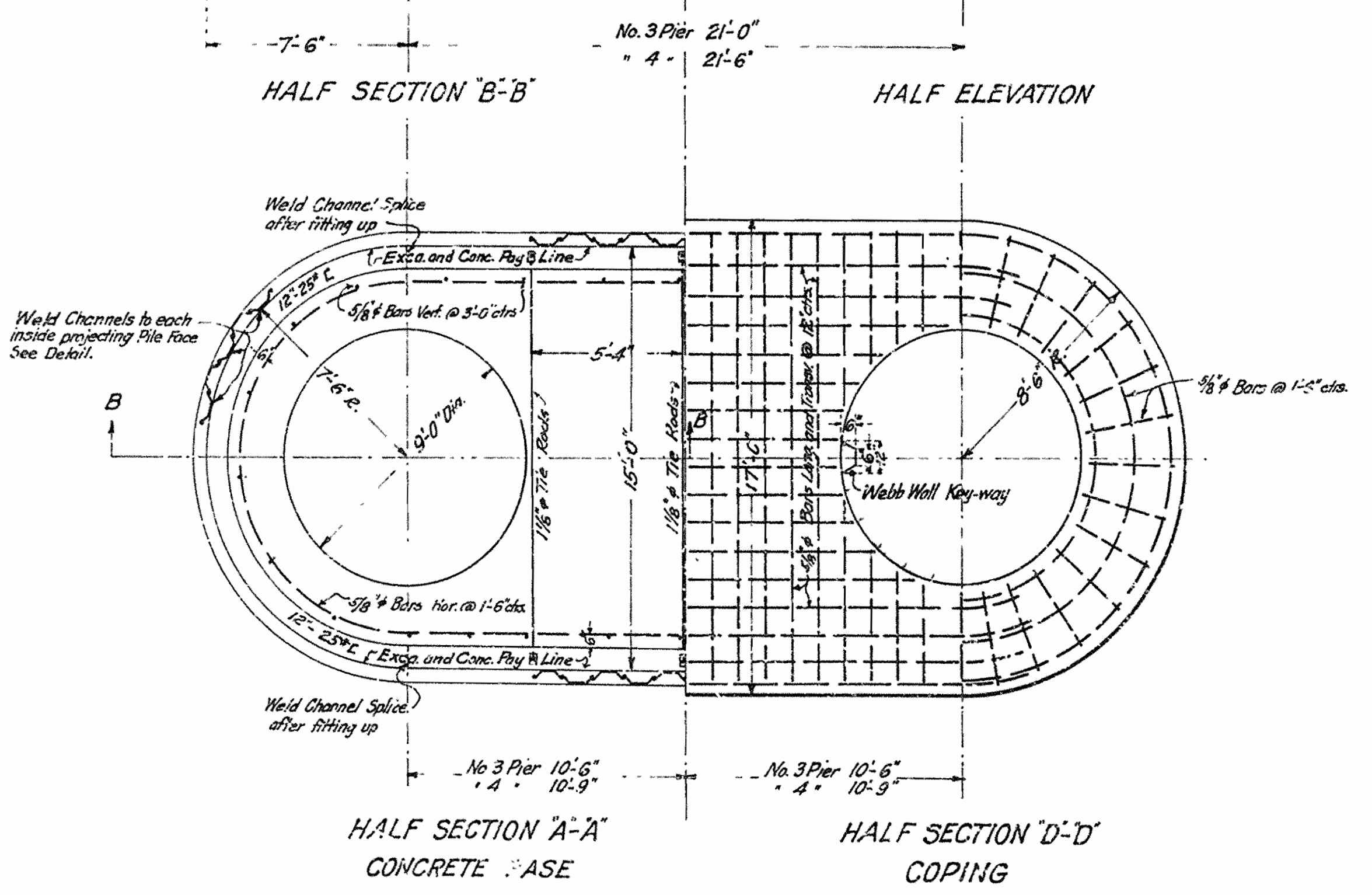
**RED RIVER BRIDGE DISTRICT**  
 OF MILLER AND LITTLE RIVER COUNTIES, ARK.  
**INDEX BRIDGE**  
 REVISED PLAN OF PIER REINFORCEMENT  
 FOR PIER No. 2  
 SHOWING DETAILS  
 H. Englander, Consulting Engr. Jan. 18, 1934.  
 APPROVED J.W. Dawson, Engr. Jan. 18, 1934.  
 Scale: 1/4" = 1'-0"

BRIDGE No. 1474 DRAWING No. 5051



NOTES.

1. Excavation and Concrete Quantities shall be figured to the line marked "Exco. and Conc. Pay Line."
2. All Concrete shall be Class 'A' (1:2:4 Mix) and shall be poured in the dry.
3. All Steel Sheet Piling shall be as good as new. All Splices in Steel Sheet Piling shall develop the full Tensile Strength of the Piling.
4. The Engineer shall have the right to increase or decrease the extent of the Work not to exceed twenty five per cent (25%) of the Total without invalidating any Conditions or Provisions of the Contract, and without any change in the Contract Unit Prices.
5. All exposed edges of Concrete to be Chamfered 1/2 inches.
6. Twelve (12) Channel Braces are to be welded to Steel Sheet Piling (each Pier) at the Rod Connecting Points as shown by above Diagram, named Details.
7. Steel Bar Reinforcement to be placed not less than 3 inches from Face of Concrete. Bar Laps to be not less than 40 Diameters.
8. Steel Sheet Piling to be not less than 44 feet Long.
9. Existing Caisson Walls shall not be disturbed until Condition of interior of Working Chamber has been investigated. If said Condition is good the Walls shall be removed up to 15 feet above Shale, and Surfaces of Concrete thoroughly Scarified to insure Bond between old and new Concrete. If Voids or Sand be found in Working Chamber same shall be grouted as directed by the Engineer before pouring Concrete Base. Investigation of Working Chamber and Grouting, if any, will be paid for as Extra Work.
10. All Work shall be done in accordance with the Plans and Specifications, and under the Direction of the Engineer of the Red River Bridge District.



**RED RIVER BRIDGE DISTRICT**  
 OF MILLER AND LITTLE RIVER COUNTIES, ARK.  
**INDEX BRIDGE**  
 REVISED PLAN OF PIER REINFORCEMENT  
 FOR PIERS 3 AND 4  
 SHOWING DETAILS  
 Ira G. Hedrick, Consulting Engr. May 2, 1934.  
 APPROVED J.W. Dawson, Engr. May 2, 1934.  
 Scale: 1/4"=1'-0"